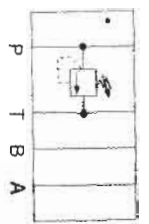
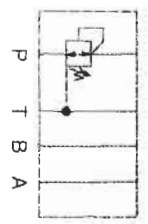
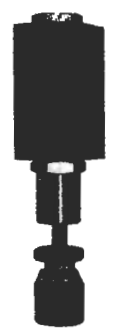


MODULAR FLOW CONTROL VALVE

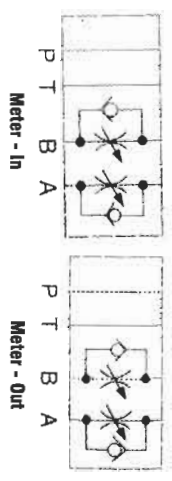
Mounting Standard : (CETOP 03, CETOP 05), (NG 6, NG10), ISO 4401



RELIEF MODULAR VALVE FOR P. LINE			W. P. : 210 kg/cm ²
CODE	SIZE	PRESSURE ADJU. RANGE (kg f/cm ²)	FLOW L/min.
MBP-02-C	1/4"	C : 08-140	35
MBP-03-H	3/8"	H : 70-210	70

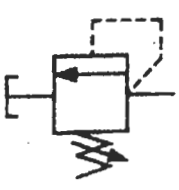


REDUCING MODULAR VALVE FOR P. LINE			W. P. : 210 kg/cm ²
MRP-02-B	1/4"	B : 8-70	35
MRP-03-H	3/8"	H : 70-210	50

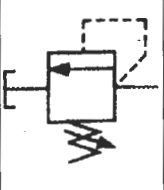


THROTTLE AND CHECK MODULAR VALVE FOR A,B LINE			W. P. : 250 kg/cm ²
MSW-02-X	1/4"	X : METER OUT	35
MSW-02-Y	1/4"	Y : METER IN	35
MSW-03-X	3/8"	X : METER OUT	70
MSW-03-Y	3/8"	Y : METER IN	70

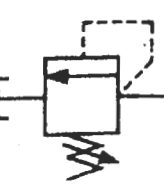
PRESSURE CONTROL VALVE



DIRECT TYPE RELIEF VALVE			W. P. : 140 kg/cm ²
CODE	SIZE	PRESSURE ADJU. RANGE (kgf/cm ²)	FLOW l/min.
YBT-02-B	1/4"	B : 8-70	20
YBT-03-B	3/8"	B : 8-70	20
YBT-02-C	1/4"	C : 35-140	20
YBT-03-C	3/8"	C : 35-140	20



REMOTE CONTROL RELIEF VALVE			W. P. : 250 kg/cm ²
YBG-02-B	1/4"	B : 8-70	20
YBG-03-B	3/8"	B : 8-70	20
YBG-02-C	1/4"	C : 35-140	20
YBG-03-C	3/8"	C : 35-140	20



PRESSURE CONTROL VALVE			W. P. : 250 kg/cm ²
CODE	SIZE	PRESSURE ADJU. RANGE (kgf/cm ²)	FLOW l/min.
YBT-02-250	1/4"	-	4
YBG-02-250	1/4"	-	4